



ROSCOE

AND THE

BIG BED BUG HUNT

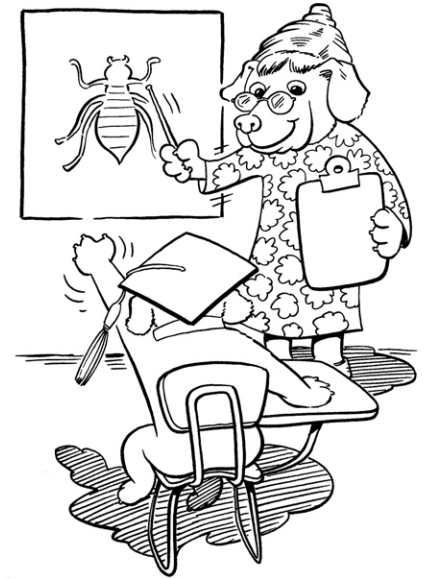


**An activity book with games, puzzles, coloring pages,
and helpful information about Bed Bugs**



Roscoe is a beagle detective who finds bed bugs.

He went to a school to learn how to find these insects. He looks for them every day in homes and offices.



Roscoe stays healthy by running in the park,



Taking weekly baths,



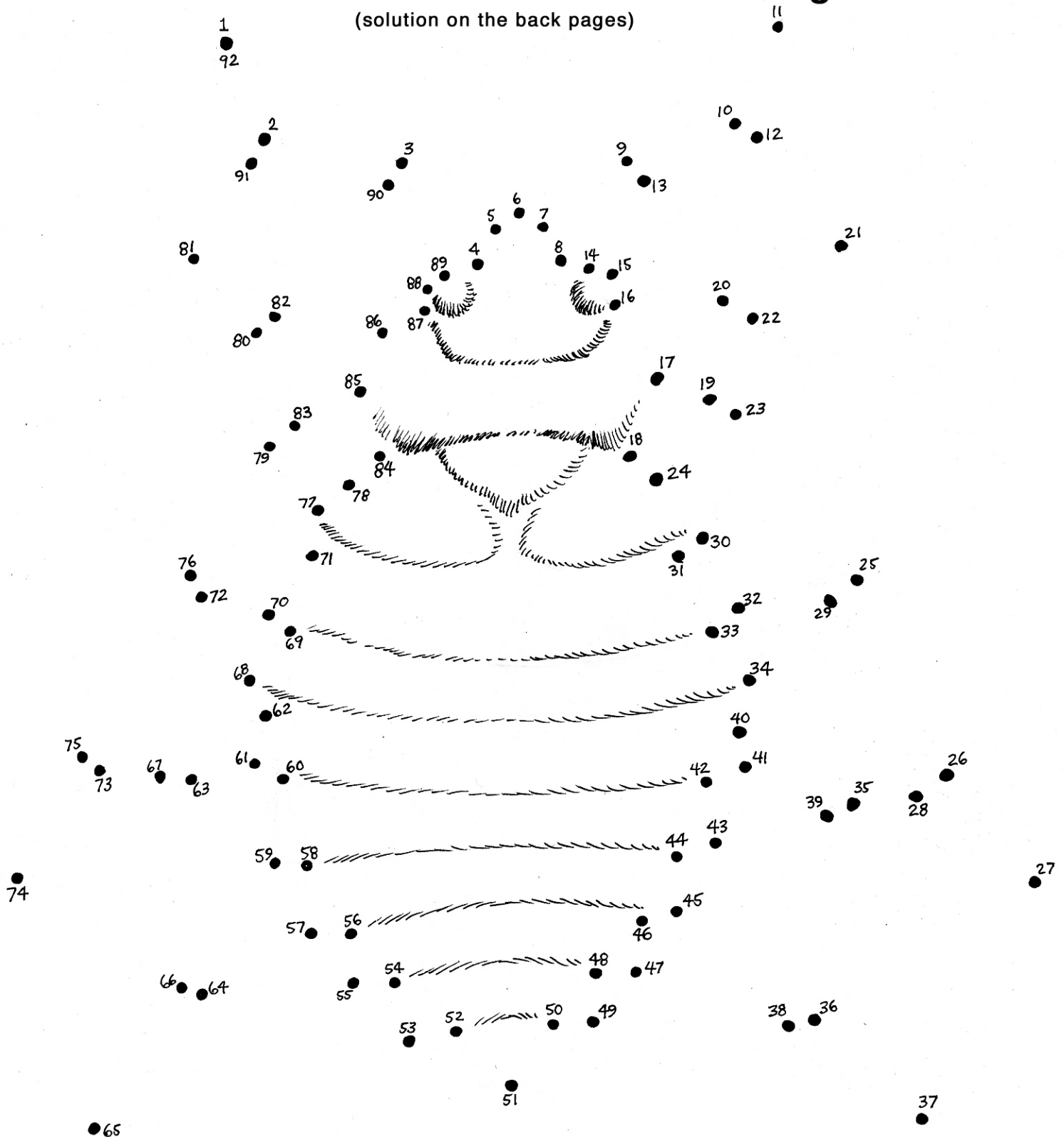
Getting lots of sleep, and eating nutritious dog food.



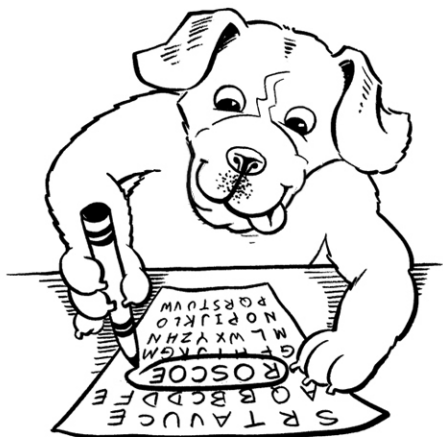
Help Roscoe find the Bed Bugs and other hidden items. You will also learn how to see if you have Bed Bugs and prevent them from becoming a problem in your home and school.

Connect the Dots to see what a bed bug looks like!

(solution on the back pages)



Bed bugs are insects that are very small, flat, and hide in cracks inside people's homes and other places. Bed Bugs feed on people (and animals) for food. While they don't make people ill, no one wants to have them. Bed Bugs are not your fault and are nothing to be ashamed of. Anyone can get them: people who are neat and clean and live in all towns and neighborhoods.



WORD SEARCH

(solution on the back pages)

Roscoe has to find Bed Bugs that hide very well. Help Roscoe find and circle all the words in the puzzle below. Look up, down, forward, backward, and diagonally.

Anywhere
Bed Bug
Bite
Box Spring

Cranny
Crevice
Detection
Eggs

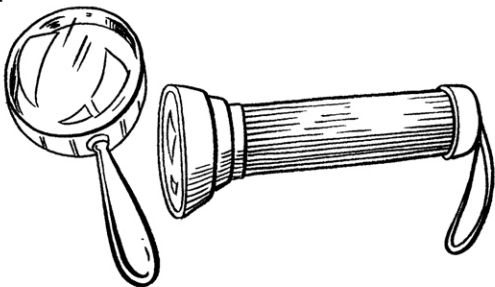
Hide
Insect
Inspect
Mattress

Crack
Furniture
Nook
Nymph

W A N Y W H E R E M M
R B N M U O P T G A F
D E T E C T I O N T U
A D G H E B N X I T R
S B H G I J S N R R N
C U P A S D P O P E I
R G M P O I E O S S T
A H Y D S B C K X S U
N I N S E C T F O E R
N T C R A C K E B D E
Y G O C R E V I C E H

Tips for Hunting for Bed Bugs:

A Magnifying Glass and Flashlight are helpful to use to search:



1. Take the blankets and sheets off the bed. Check the Mattress especially the seams.

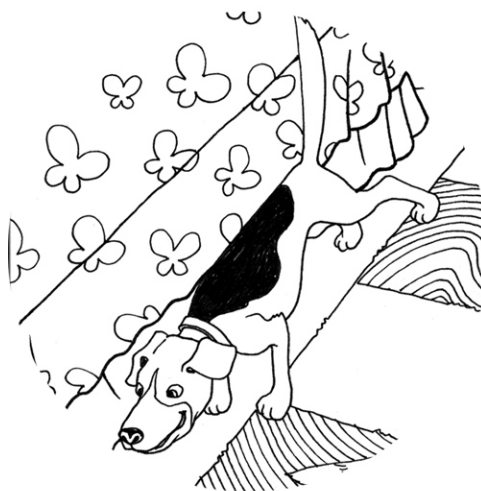
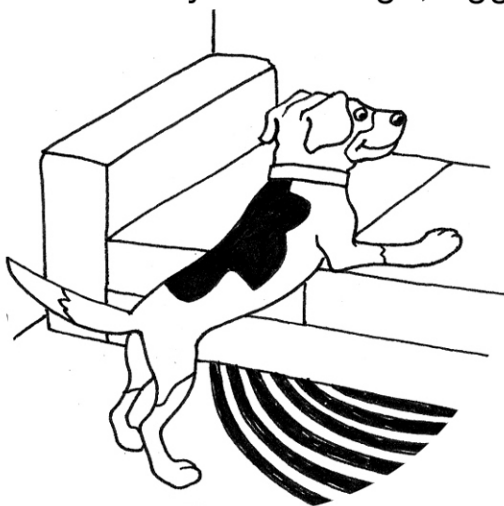
2. Inspect the Box Spring. Look closely where the Box Spring rests on the frame.

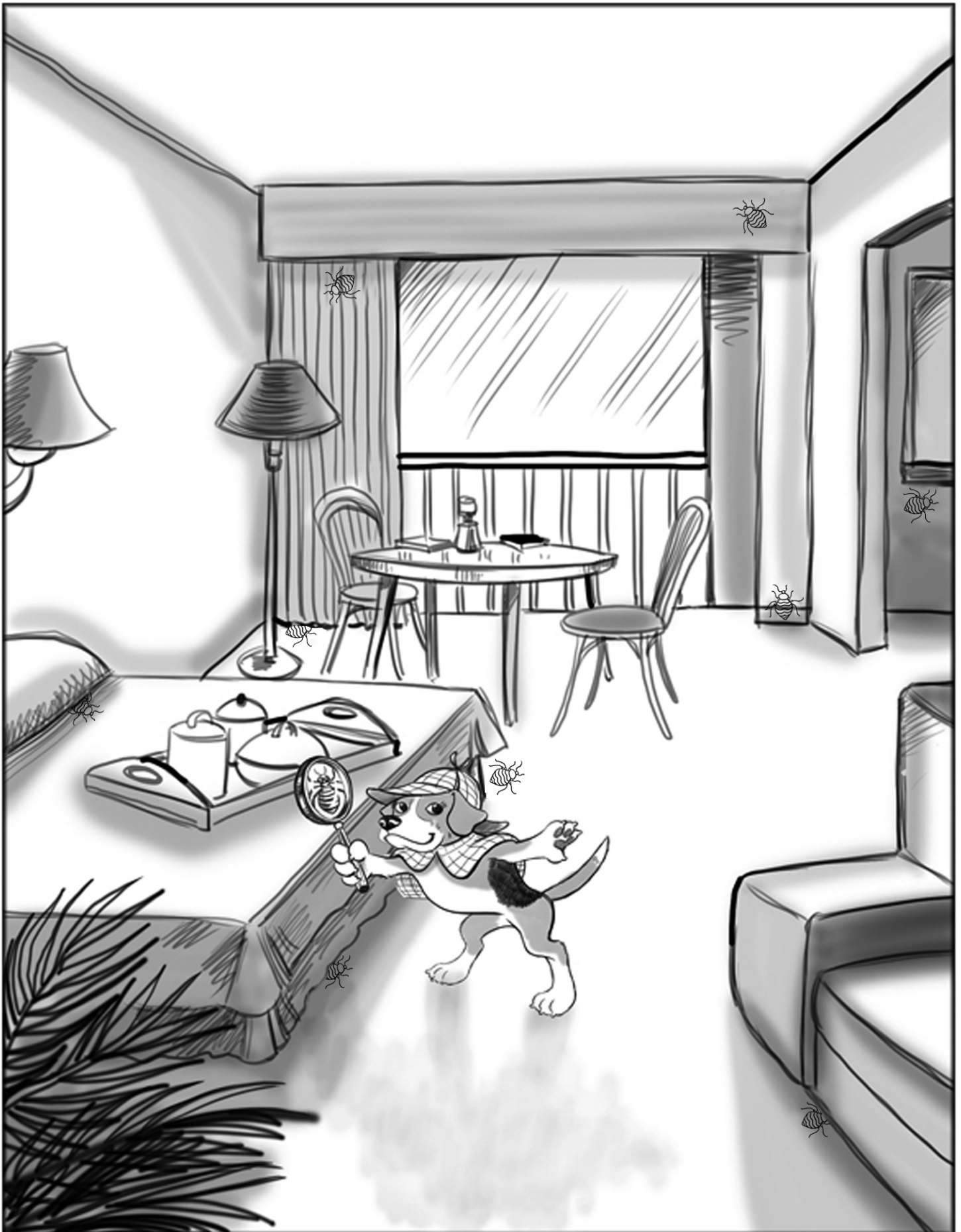
3. Check behind the Headboard

4. Look at the Nightstand, Dresser Drawers, Chairs, Sofas, Picture Frames (including the backs of each item), and along the walls where the carpeting meets the base molding.

5. Concentrate on cracks and crevices, seams, joints and screw holes in the room.

6. Look for very small bugs, eggs, Bed Bug skins, and raised black dots.





Roscoe is looking at one Bed Bug with his magnifying glass. There are 9 more Bed Bugs in this room. Can you help Roscoe find them?

(solution on the back pages)



Now that you're great at hunting for Bed Bugs, help Roscoe find all 16 of the magnifying glasses.

(solution on the back pages)

THE BED BUG LIFE CYCLE

Roscoe can find Bed Bugs however old they are.

You should also know how to recognize Bed Bugs of all ages:

Bed Bug eggs are white sticky ovals that are the size of a speck of dust.

When born, Bed Bug nymphs are clear and the size of a poppy seed.

They get darker as they get older, changing color
from pale yellow to tan to red/dark brown.

Adult Bed Bugs are reddish brown and the size of an apple seed.

Bed Bugs need to feed in order to grow from one stage to another.

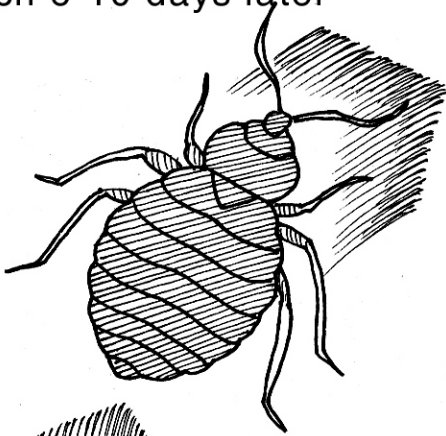
Bed Bugs need to shed their skins between stages.

You may see cast skins near bugs' hiding places.

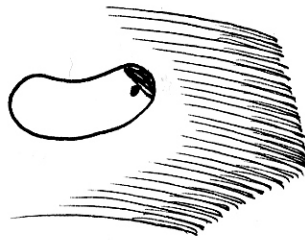
A Bed Bug can go from newly hatched to an adult in about 5 weeks.

Adult (5.5 mm long)

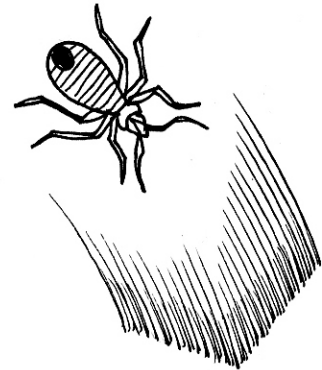
Females lay up to 5 eggs a day
that hatch 6-10 days later



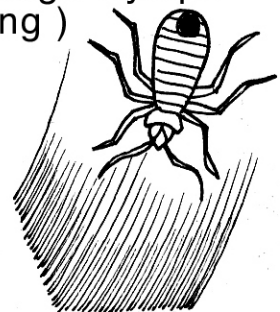
Egg (1 mm long)



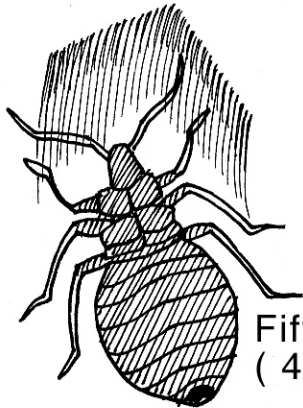
First Stage Nymph
(1.5 mm long)



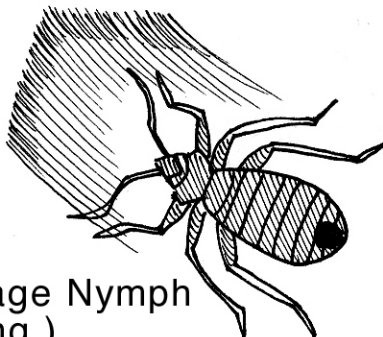
Second Stage Nymph
(2 mm long)



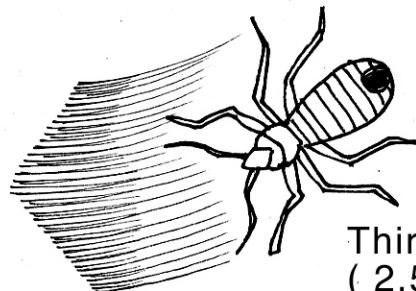
Fifth Stage Nymph
(4.5 mm long)

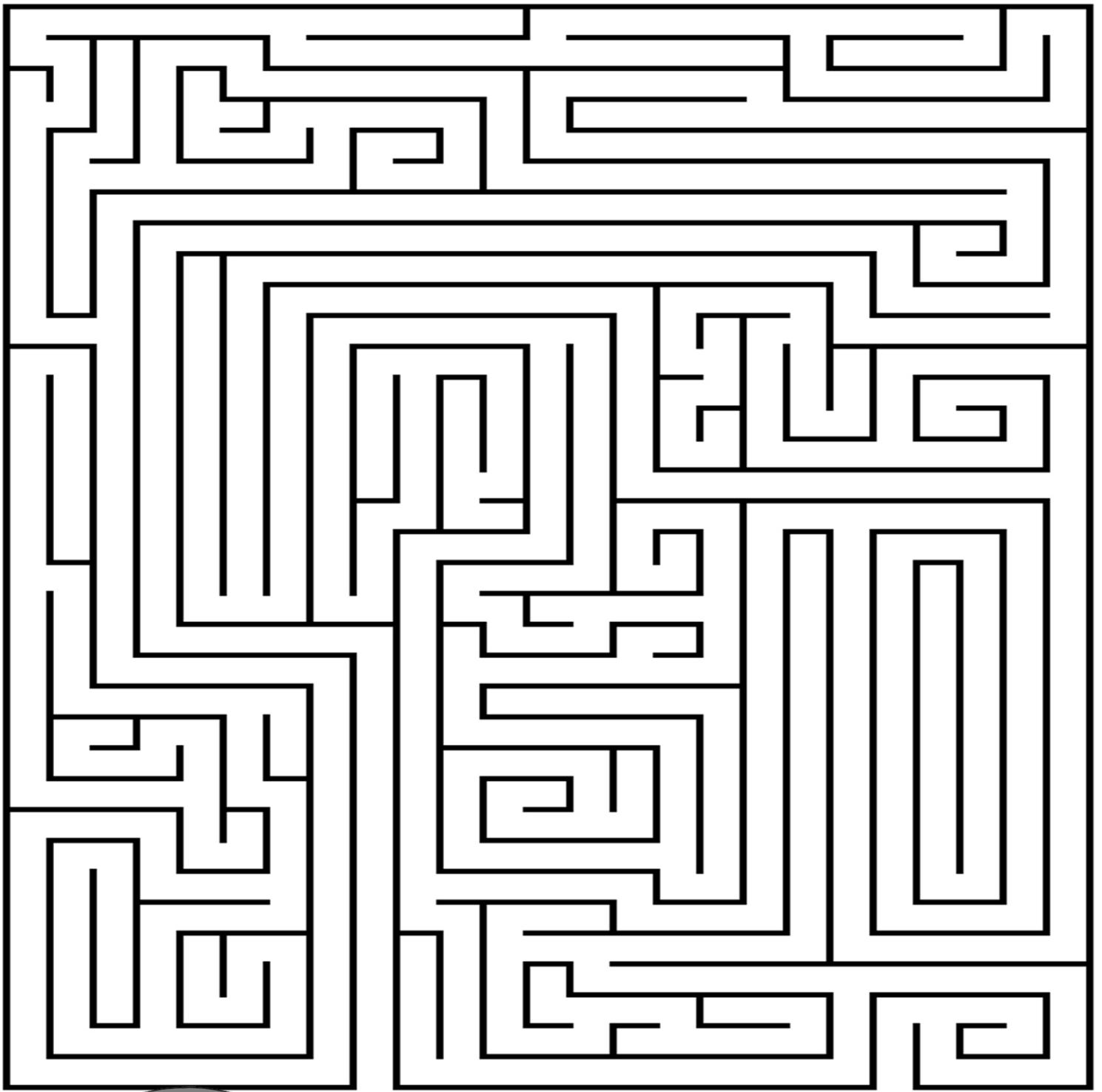


Fourth Stage Nymph
(3 mm long)



Third Stage Nymph
(2.5 mm long)





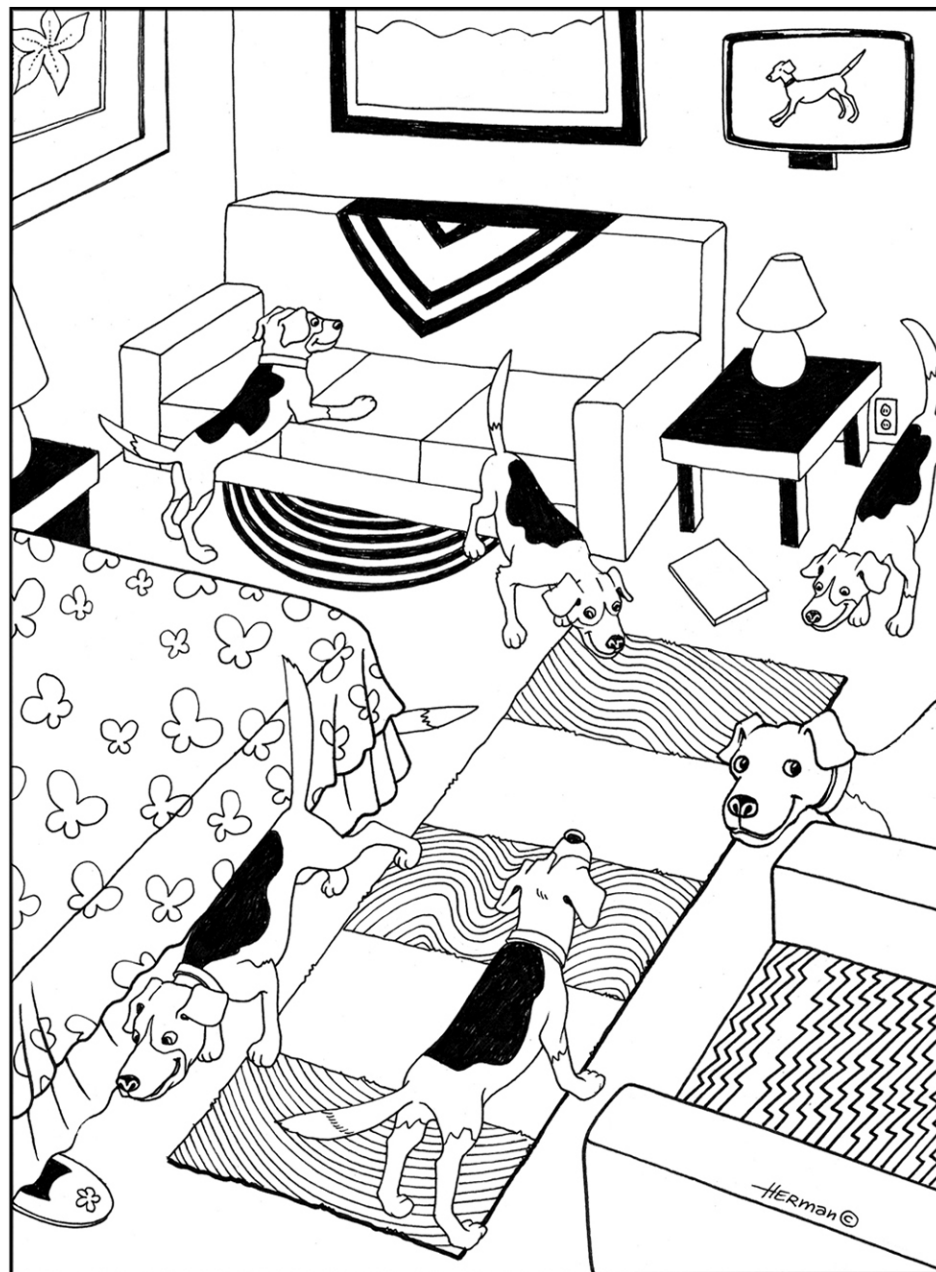
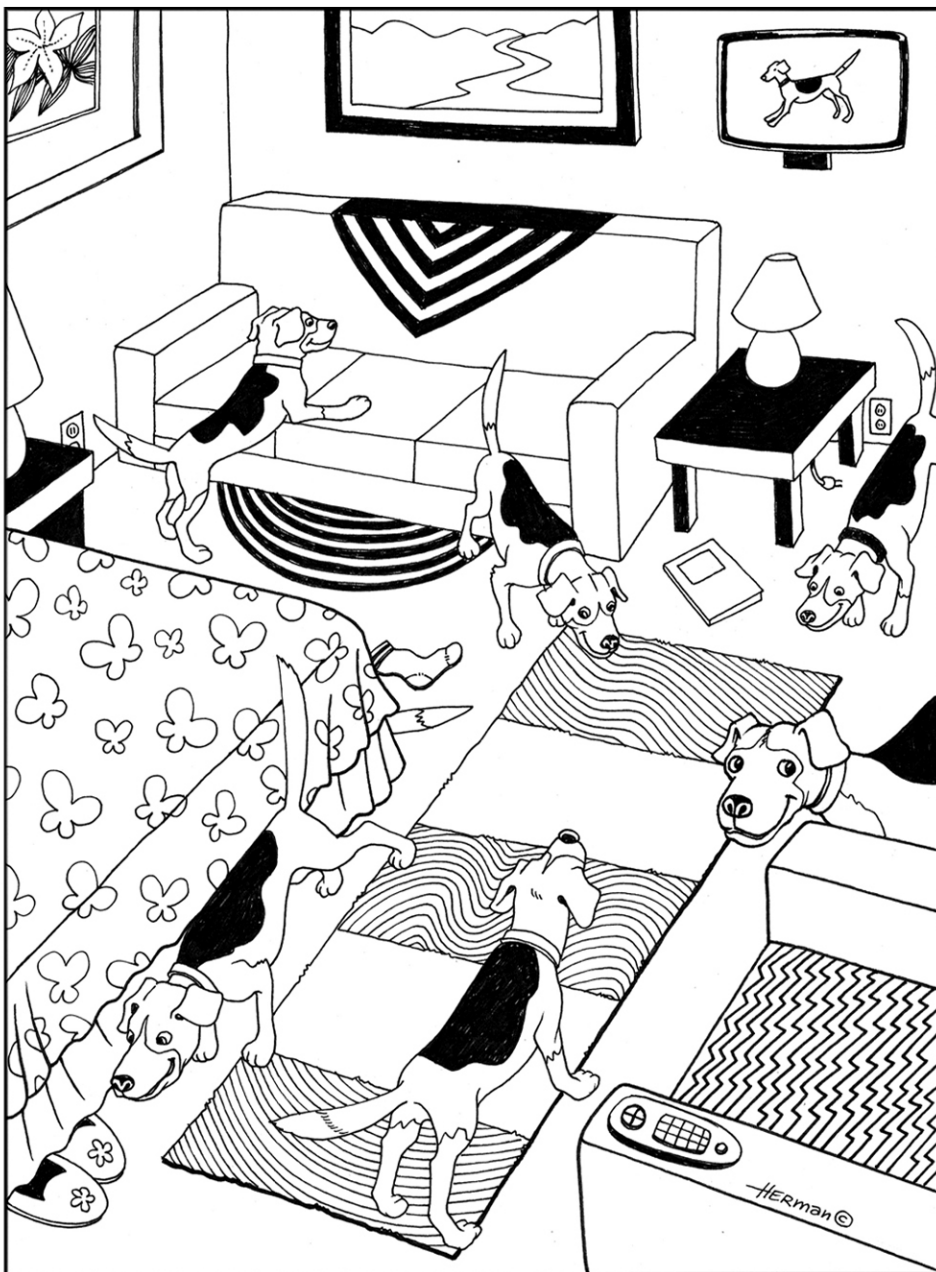
START



END



Locating Bed Bugs is almost as hard as finding your way through this maze. Help Roscoe get to the end and catch the Bed Bug. (solution on the back pages)



Roscoe takes a fresh look at every house he inspects. Help Roscoe pick out all the differences between the two rooms.

(solution on the back pages)

HIDDEN ITEMS

Assist Roscoe by locating all the items hidden in this big room.

(solution on the back pages)

HOCKEY STICK

BROOM

FOOTBALL

FISH HOOK

HEART

DUST PAN

UMBRELLA

CANDLE

RULER

BUTTERFLY

TOOTHPASTE

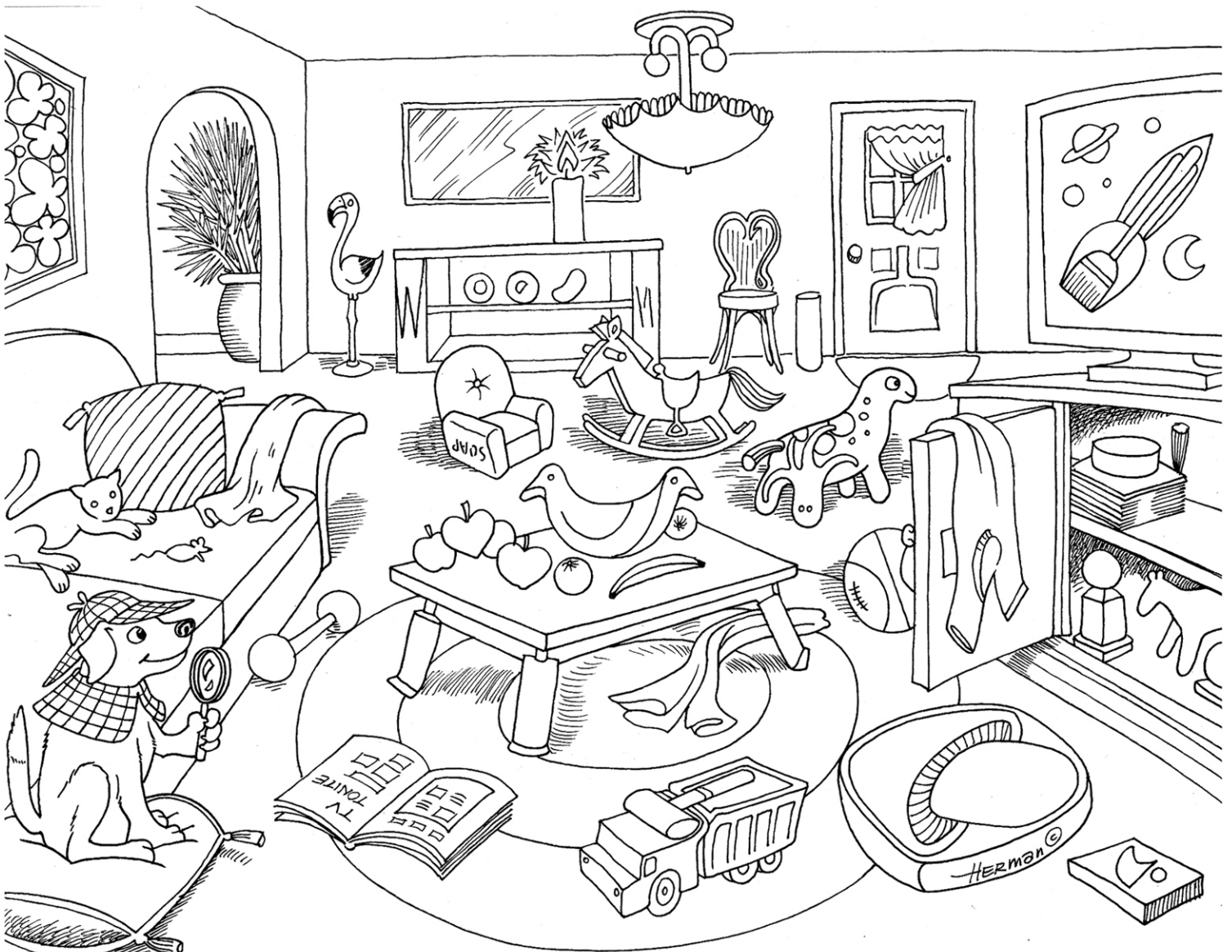
OCTOPUS

PENNANT

BAR OF SOAP

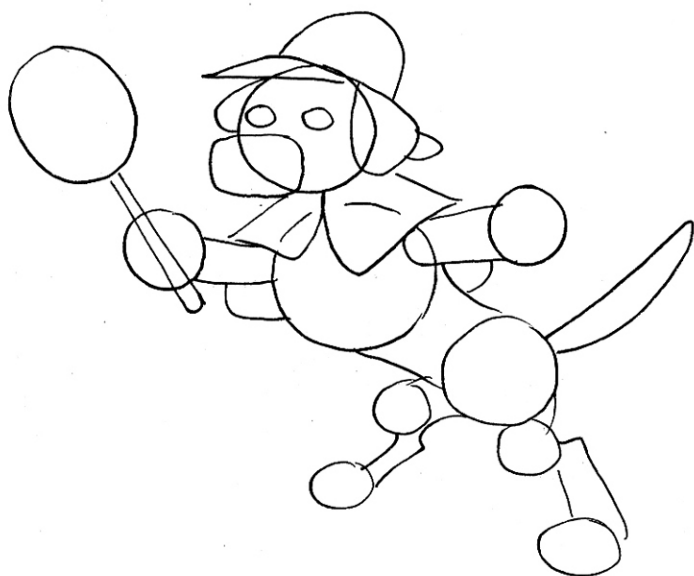
HAMMER

GRADUATION CAP



HOW TO DRAW ROSCOE (FULL BODY)

First: Draw a bunch of circles and connect them with lines



Second: Erase some of the lines and add the nose, fingers and toes



Third: Refine and round and add the toenails

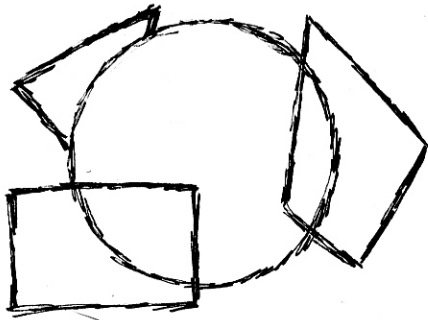


Fourth: Add the pupils, darken the nose, add the spot on his back and the pattern on his hat

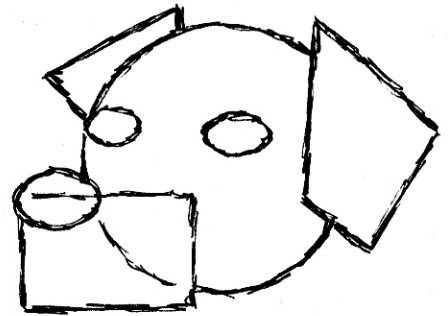


HOW TO DRAW ROSCOE'S HEAD

First: Sketch out a circle and these other shapes



Second: Add the eyes and nose



Third: Rough in his hat and smile and jacket top

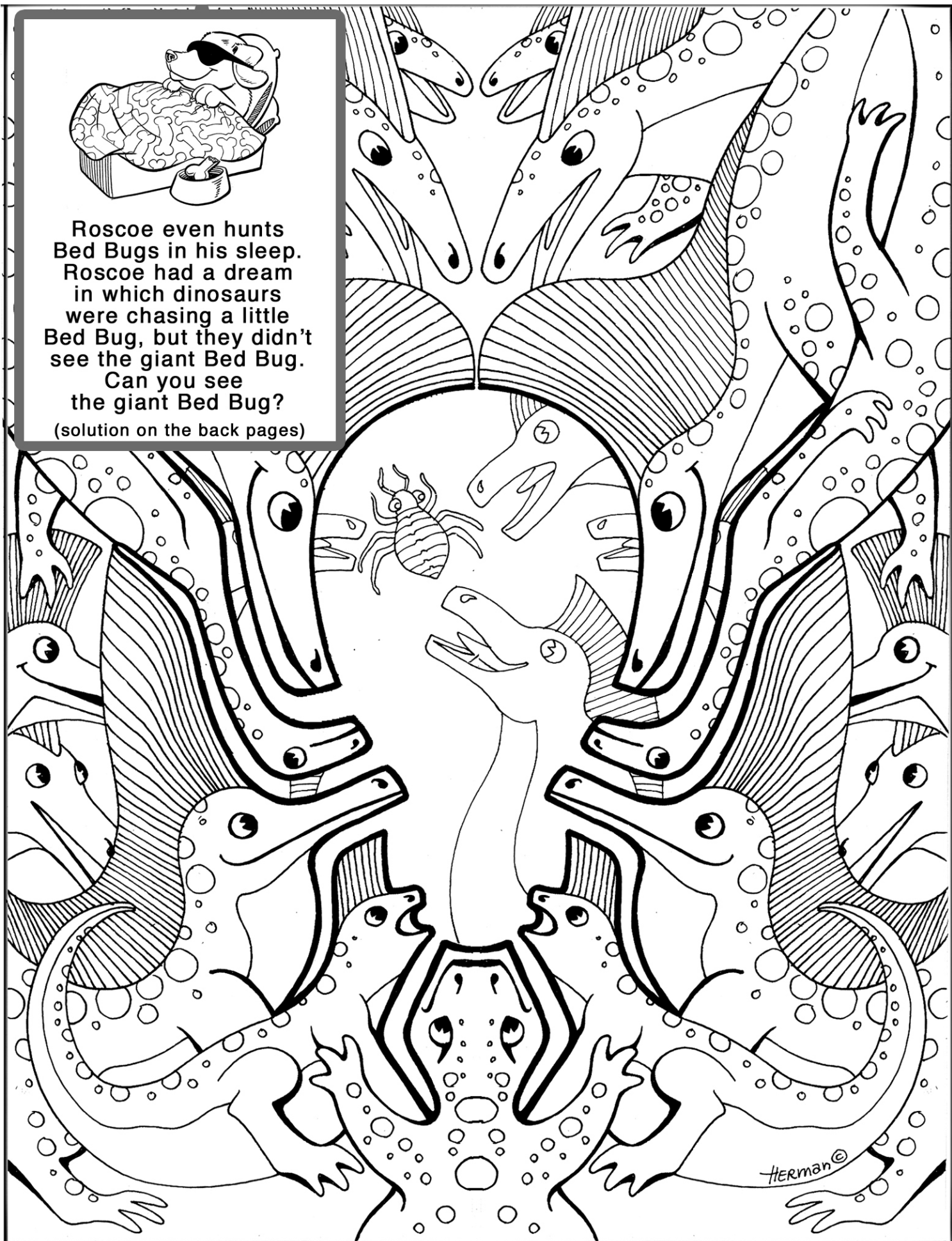


Fourth:
Add the pupils,
round out the shapes,
darken the nose,
sketch in his
markings,
shade his cap
and add the pattern

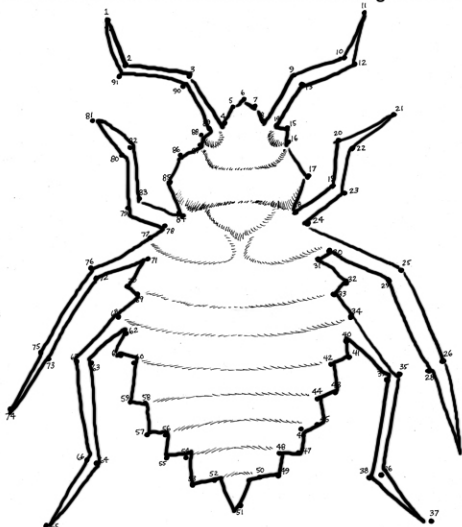




Roscoe even hunts
Bed Bugs in his sleep.
Roscoe had a dream
in which dinosaurs
were chasing a little
Bed Bug, but they didn't
see the giant Bed Bug.
Can you see
the giant Bed Bug?
(solution on the back pages)



Connect the Dots to see what a bed bug looks like



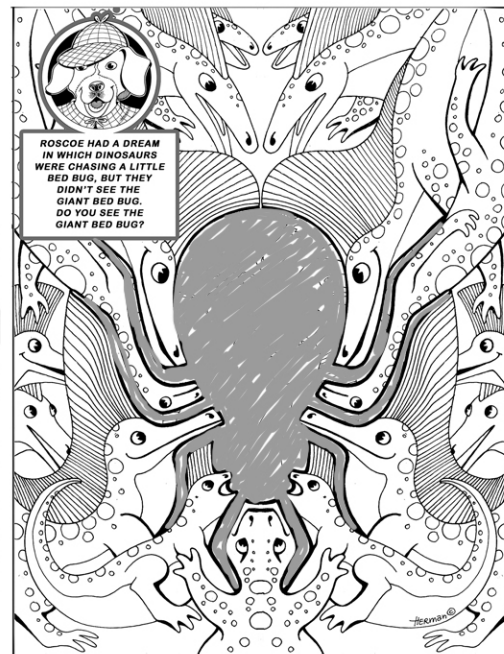
Bed bugs are insects that are very small, flat, and hide in cracks inside people's homes and other places. Bed bugs feed on people and animals for food. While they don't make people ill, no one wants to have them. Bed bugs are not your fault and nothing to be ashamed of. Anyone can get them; people who are neat and clean and live in all towns and neighborhoods.



WORD SEARCH

Roscoe has to find bed bugs that hide very well. Help Roscoe find and circle all the words in the puzzle below. Look up, down, forward, backward, and diagonally.

Anywhere	Creamy	Hide
Bed-Bug	Crawls	Insect
Bite	Detection	Nymph
Box Spring	Eggs	
Crack	Furniture	



Thanks for helping ROSCOE in his Big Bed Bug Hunt!

We hope you enjoyed this activity and coloring book and learned a lot about Bed Bugs.

Sleep tight and don't let the Bed Bugs bite!



About Bell Environmental Services, Inc.
Bell Environmental Services is a pest control company specializing in finding and solving Bed Bug issues.

We hope you don't have Bed Bugs, but if you have a problem we can help.

Please call 877-662-9991, email roscoe@bell-environmental.com, or visit www.bellbedbugs.com.

Roscoe is a real beagle detective who hunts Bed Bugs. To learn more about Roscoe, visit www.roscoethebedbugdog.com.

Roscoe the Bed Bug Dog® is a registered trademark of Bell Environmental Services, Inc.

Copyright © 2011 Bell Environmental Services, Inc. All Rights Reserved.